



Reflection and Vision for Educational Technology toward Learning Society

September 2~3, 2005
HIT Center, Hanyang University, Seoul

Organized by  The Korean Society for Educational Technology

Supported by  Ministry of Education & Human Resources Development

 Korean Education & Research Information Service

Welcoming Address



Prof. Sungho Kwon
President (2005-2006)

Welcome to the KSET 20th Anniversary International Conference! It is our great pleasure to have you in Seoul, and to have you join us in celebration of various anniversary events and activities.

This annual conference has special meaning for most of KSET members that we want to reflect and have vision. We hope to reflect back to see how KSET has contributed to the society, and changed our professional fields in the past 20 years.

We are most delighted to have two most distinguished and world famous researchers as keynote speakers, Dr. Marlene Scardamalia and Dr. Carl Bereiter from University of Toronto and the Institute of Knowledge and Innovative Technology in Canada. To celebrate our 20th anniversary, we are most honored to have Dr. Sharon Smaldino, President of AECT, Dr. Kanji Akahori, President of JSET, Prof. Shin Mizukoshi, Dr. Zhiting Zhu, and many well known researchers from Japan and China.

We hope not only the KSET members and Korean educational technology communities but also all the participating international guests will gain personally and professionally meaningful experiences as we share our expertise, ideas, and friendships. We hope you will make many new friends and gain insights to go back home to further your work until we meet next time. Please enjoy visiting Seoul and coming to the conference.

September 2, 2005

Sungho Kwon, Ph.D.

President, KSET
Hanyang University

Mi-Lee Ahn, Ph.D.

Chair, Organizing Committee
Hanyang University

KSET

Conference Themes

The conference will provide opportunities to enhance professional skills in the field of educational technology and to strengthen the community of educational technologists. We hope the conference will bring together a large number of researchers, practitioners, teachers, trainers, and students interested in educational technology from Korea and overseas. The conference covers various issues as follows.

- Reflective reviews and future directions for educational technology
- Adopting emerging theories into practices
- Role of new media: Innovative tools and methods
- Paradigm shifts in instructional design and development
- Application of technology for special group of learners
- Teacher education in technology oriented learning environments
- Exemplary cases of ICT in primary and secondary schools
- E-Learning and best practices and policies in human resources development

Program Schedule

Day 1 September 2, 2005

- 9:30-10:00 Registration
- 10:00-11:00 Opening Ceremony Dr. Mi-Lee AHN
Welcoming Message
Dr. Sungho KWON (President of KSET)
Congratulatory Message
Dr. Chongyang KIM (President of Hanyang Univ.)
Dr. Unna HUH (President of ICU)
Dr. Dae-Joon HWANG (President of KERIS)
Dr. Sharon SMALDINO (President of AECT)
Dr. Kanji AKAHORI (President of JSET)
Dr. Young-soo KIM (President of KAEIM)
- 11:00-12:00 Keynote Speech
Dr. Marlene SCARDAMALIA(Univ, of Toronto,Canada)
Initiating Students into a Knowledge-Creating Civilization
- 12:00-1:30 Lunch
- 1:30-3:30 Concurrent Session 1
- 3:30-4:00 Coffee Break
- 4:00-6:00 Concurrent Session 2
- 4:00-6:00 Workshop A Dr. Jeeheon RYU
- 6:30-8:00 20th Anniversary Ceremony & Reception
Dr. Yeongmahn YOU

Day 2 September 3, 2005

- 9:30-10:00 Registration
- 10:00-10:30 Day Opening Dr. Youngsun YANG
- 10:30-11:30 Keynote Speech Dr. Carl BEREITER
Educational Implications of the New Creativity
- 11:30-12:00 Posters & Exhibitions Dr. Kyungsu WANG
- 12:00-1:30 Lunch
- 1:30-3:30 Concurrent Session 3
- 3:30-4:00 Coffee Break
- 4:00-6:00 Concurrent Session 4
- 3:30-6:00 Workshop B Dr. Carl BEREITER &
Dr. Marlene SCARDAMALIA
- 6:00-6:30 Closing Ceremony Dr. Dongsik KIM

Concurrent Sessions

September 2nd (Friday)

KOR Korean Sessions

ENG English Sessions

Track A

Track B

Session I 1:30~3:30	KOR Chair: Cheolil LIM	ENG Chair: Jong-Yeon LEE
	Special Session for KSET 20th Anniversary Research Review 1	
	Journal of Educational Technology 20 years: Analysis of research domains, research methods, and learning theories Yongchil YANG, Hyunmi CHUNG Discussant: Hyoseung BYUN	Integrating educational technology into project- based learning: An example of 4th grade projects Soon Nam CHOI, Jeong HEE SEO, Dot RAMSDELL
	Retrospecting and prospecting constructivism: The comparison of Korea and western countries Inae KANG, Jeongim CHOI, Junga CHANG Discussant: HoiSoo KIM	A comparison of teachable agent with peer tutoring in interest and comprehension Sun-young LEE, Karam LIM, Cheon-woo HAN, Yeonhee SO, Wonsik KIM, Su-Young HWANG, Mo-Ran SHIN, Ki-Gon RYU, Mi-sun YOON, Sung-il KIM
	Directions and prospects of educational technology research methodology Kyungsu WANG, Kyungsun HONG Discussant: Hyukil, KWEON	Knowledge building pedagogy and technology Marlene SCARDAMALIA
		Development of a situated learning support system based on an MMORPG Chen Ri PIAO

3:30~4:00

Coffee Break

Session II 4:00~6:00	KOR Chair: HoiSoo KIM	ENG Chair: Sangho SONG
	Special Session for 20th Anniversary Research Review 2	
	Inquiry into the relationship between educational technology and CTL Center for Teaching and Learning Sungho KWON, Youngmahn YOU, Hyelan ROH, Mina CHOI, Younkyung SEO, Sangpil JANG Discussant: Byungro LIM	Improvement of teaching and learning process of higher education introducing Web bulletin board and mobile phone Kanji AKAHORI
	A direction and task of e-Learning policy Heebae KIM, Inwoo PARK, Wook CHOI Discussant: Cheolil LIM	Trends and issues in the research of Chinese educational technology Hai Lan ZHAO
	Trends of educational media research Youngsoo KIM, Youngsun YANG, Heeok HEO, Minyoung DOO Discussant: Dongjoo LEE	The Influence of individual differences (FD/FI cognitive style and degree of self-direction), perceived interactivity, educational achievement and navigational behaviors on flow in Web-based instruction Seungyun HA, W. Michael REED
		New direction for motivational interface of e-Learning system Su-Young HWANG, Cheon-Woo HAN, Wonsik KIM, Yeonhee SO, Myung-Jin LEE, Sun-young LEE, Karam LIM, Woo-Gul LEE, Misun YOON, Sung-il KIM

4:00~6:00

Workshop A

KOR Dr. Jeeheon RYU

6:30~8:00

20th Anniversary Reception

Dr. Yeongmahn YOU

Track C		Track D	
<p>KOR Chair: Inwoo PARK</p> <p>Special session for Commissioned Papers by Invitation 1</p> <p>Contributions of educational technology to corporation training: Review of past, current, and future Yuhsoon YUN</p> <p>Special education technology: Why and how to use it for students with disabilities Yong Wook KIM</p> <p>Education system of ROK navy & educational technology Donghyun LEE</p>		<p>ENG Chair: Heeok HEO</p> <p>The development of cyber-education in China: A review of experiences and lessons Zhiting ZHU, Wang WEI, Luo HONGWEI</p> <p>Vygotsky's instructional approaches applied to educational drama Echeol KANG</p> <p>Twelve ways to reduce cognitive load in Web based complex task Kyung KIM, Dongsik KIM</p> <p>Design for the individualized teachable agent Yeonhee SO, Myung-Jin LEE, Wonsik KIM, Sunyoung LEE, Su-Young HWANG, Cheon-woo HAN, Karam LIM, Woo-Gul LEE, Sung-il KIM</p>	
		<p>Session I 1:30~3:30</p>	
<p>Coffee Break</p>			
<p>KOR Chair: Yongchil YANG</p> <p>Special session for Commissioned Papers by Invitation 2</p> <p>IT trends in Korea Kwan Ho SONG</p> <p>Ubiquitous and information security Tai Myoung CHUNG</p> <p>Trends in issues of e-Learning @ Samsung SDS Kyounghee YOON</p>		<p>KOR Chair: Haesun CHUNG</p> <p>Student modeling for adaptive agent to enhance interest and comprehension Myung-Jin LEE, Woo-Gul LEE, Karam LIM, Cheon-woo HAN, Yeonhee SO, Sunyoung LEE, Su-Young HWANG, Sung-Hyun YUN, Dong-Seong CHOI, Sung-il KIM</p> <p>A case study of development of resource-based Web contents Youngsun YANG, Eunsoon CHOI</p> <p>Computer-assisted instructions as alternative compensatory opportunities for the low achievement students and new perspectives in the role of teachers HyeRan PARK, HyunMi WOO</p> <p>Learner adaptive user interface: An example case Hyun Jin CHA, Yong Se KIM, Sung Ah KIM, Sun Hee PARK, Yun Jung CHO</p>	
		<p>Session II 4:00~6:00</p>	
		<p>4:00~6:00</p>	
		<p>6:30~8:00</p>	
<p>Reception is hosted by Chongryang KIM, the President of Hanyang University</p>			

Concurrent Sessions

September 3rd (Saturday)

KOR Korean Sessions

ENG English Sessions

Track A

Track B

<p>Session III 1:30~3:30</p>	<p>KOR Chair: Il-Hyun JO</p> <p>Special Session for 20th Anniversary Research Review 3</p> <p>The retrospective and prospective of the influence of ICT in Korean educational technology Okhwa LEE, Minkyung KIM, Miryang KIM, Miheon JO, Heeok HEO Discussant: Wooyong EOM</p> <p>Reconstruction of media education from the standpoint of educational technology Sungcho KWON, Younkung SEO, Kyunghee KANG, Sookyoung RYU, HyeonAe SIM, Sunhee PARK Discussant: Jeongim CHOI</p> <p>An analysis of trends in WBI researches published in the major Korean and American journals of educational technology Sangsoo LEE, Jeongcha KANG, Inja LEE Discussant: Sangho SONG</p>	<p>ENG Chair: MyungHee KANG</p> <p>An e-learning LMS for supporting self-regulated learning Cheolil LIM</p> <p>Irony of e-Learning: Low interaction but satisfied Kijung KO, Jeeheon RYU</p> <p>Imagine a world: The future of e-Learning Shaun REIN</p> <p>Agent design for online collaborative learning Heejeon SUH, Kyungae MOON</p>
	<p>3:30~4:00 Coffee Break</p>	
<p>Session IV 4:00~6:00</p>	<p>KOR Chair: Sook-Hi KANG</p> <p>Special Session for 20th Anniversary Research Review 4</p> <p>A Review of distance education research in Korea: 1985-2005 Namin SHIN, Junghoon LEEM, Hye-Jung LEE Discussant: Haesun CHUNG</p> <p>Creative knowledge driven society and ecological learning health: Exploration to improve learning viability through research into learning health Yeongmahn YOU, Kyuyoung LEE, Hyunkyung CHO, Yoonkyung YI, Miyoung SONG Discussant: Il-Hyun JO</p>	<p>ENG Chair: Inae KANG</p> <p>InTime: An online teacher education resource Sharon SMALDINO</p> <p>International trends in e-Learning quality assurance Mi-Lee AHN, Kyunghah SOHN, Yong KIM</p> <p>Considering standard factors in e-Learning evaluation Eunsoon CHO</p> <p>Selection of content delivery strategies to improve e-Learning outcomes in universities Jong-Yeon LEE</p>
	<p>3:30~6:00 Workshop B ENG Dr. Carl BEREITER & Dr. Marlene SCARDAMALIA</p>	
<p>6:00~6:30 Closing Ceremony Dr. Dongsik KIM</p>		

Track C		Track D	
<p>ENG Chair: Insook LEE</p> <p>Special Session for Media Expression, Learning and Literacy (MELL) project</p> <p>A challenge of the MELL project to digital media society: Following the tracks of 2001-2005 Shin MIZUKOSH</p> <p>Designing workshops of "Media Play": Toward awareness of media environment Mariko MURATA</p> <p>From media literacy to media communication design: Comprehensive framework of practice and critique Hajime HASEGAWA</p> <p>Comparative cultural examination of media literacy in East Asian region Discussant: Hyeon-Seon JEONG</p>		<p>KOR Chair: Namin SHIN</p> <p>A study on the effects of "Seven-jump problem based learning model enhanced by the Internet" for students' solving controversial issues in social studies on ability of economic literacy and argumentation Jonggyu BAE</p> <p>Design and development of teacher program by e-PBL</p> <p>Electronic teaching portfolio for pre-service teachers: Why, What, and How to develop and use Mi-Ja SHIM, Yang-Whan SOL</p> <p>A multivariate analysis of learners' perceptions regarding web-based multimedia materials for learning effectiveness Young-Sook JUNG</p> <p>A study on the blended tutoring as the learner support system in e-Learning Young-Ran JOUNG, Jae-Woong KIM, Hyo-Seon CHO</p>	
		<p>Session III 3:30~3:30</p>	
<p>Coffee Break</p>			
		<p>3:30~4:00</p>	
<p>KOR Chair: Heebae KIM</p> <p>Secure e-LEARNING Jong-Taek LEE</p> <p>A case of cyber home study in Gwangju Metropolitan of Education Hyung Joong KIM</p> <p>Development and application of LCMS to support K-12 e-Learning Sang-Hyun JANG</p> <p>Metadata standardization of educational information and its future model Yongsang CHO</p>		<p>KOR Chair: Myoungsook CHOI</p> <p>Human visual intelligence and the new territory of educational technology research Ilju RHA</p> <p>A study on media literacy education program development for early childhood teacher education applied Reggio Emilia approach Sungho KWON, Kyunghee KANG, Sunhee PARK</p> <p>Mobile learning paradigm in the nomadic society and its challenges Insook LEE</p> <p>The current research trends of mobile learning technology Minjeong KIM, Youngmin LEE</p>	
		<p>Session IV 4:00~6:00</p>	
<p>An in-depth exploration of knowledge building principles</p>			
<p>3:30~6:00</p>			
<p>"Thank you for your participation!"</p>			
<p>6:00~6:30</p>			

Events and Presentations

The 2005 KSET 20th Anniversary International Conference will be comprised with various events, presentations, and celebrating activities.

Keynote speeches

Two distinguished keynote speakers are invited.

Day 1: Dr. Marlene Scardamalia

(University of Toronto)

Day 2: Dr. Carl Bereiter

(Institute of Knowledge and Innovative Technology)

20th Anniversary Research Reviews

11 teams of Korean educational researchers have been invited to review 20 years of researches, practices, and contributions of educational technology in Korea. It will be an occasion to reflect back to 20 years of researches, and also provide directions for educational technology communities.

Commissioned Paper Presentations

We have invited outstanding practitioners from corporate training, army training, special education, and innovative use of technology in training, teaching and learning.

Concurrent Sessions

During the conference, we will have four concurrent sessions, and each presenters are assigned to have 20-30 minutes to present.

Posters & Exhibitions

In addition to concurrent sessions, there will be 20 poster presentations. and exhibition booths. A collection of e-learning contents, web solutions, and books will be exhibited by the conference sponsors. The poster session and the exhibition booths are scheduled to operate from 11am to 5pm at the conference site.

Workshops

Two workshops are scheduled, pre-registration is required due to limited seats. For inquiries about workshops, please contact Dr. Jeeheon Ryu via jeeheon@korea.ac.kr.

Workshop A

Topic: Qualitative data analysis with ATLAS.ti for verbal data: Grounded theory approach

Instructor: Dr. Jeeheon RYU

(Institute of Educational Research, Korea University)

Date/Time: Sept. 2nd / 4:00~6:00pm (Limited 30 seats)

Location: Seminar Rm #2, 5F, 2nd Engineering Bldg.

Fee: \$20.00 (₩20.000)



This workshop is designed for the beginners who want to analyze verbal data transcribed from interview and/or observation. The audience will learn how to use ATLAS.ti, one of the most popular computerized tools for qualitative data analysis. Specifically, the workshop will focus on coding process and linking codes in the grounded theory perspective.

The workshop is consisted of two parts: (1) use of ATLAS.ti and (2) conduct grounded theory for verbal data. Although the primary target audience is the beginner of using qualitative data analysis for verbal data, this workshop would fit to the intermediate person of using qualitative data analysis. The workshop activities will be based on hands-on practices and collaboration.

Workshops

Workshop B

Topic: An in-depth exploration of knowledge building principles

Instructors: Dr. Carl BEREITER
(Institute for Knowledge Innovation & Technology)
Dr. Marlene SCARDAMALIA
(University of Toronto)

Date/Time: Sept. 3rd / 3:30~6:00pm (Limited 50 seats)
Location: Rm #210, 2F, HIT Center
Fee: \$20.00 (₩20,000)



This workshop is based on the 12 principles introduced in Scardamalia's paper on Knowledge Building Pedagogy and Technology. Participants should already have some familiarity with these principles, either by attending Scardamalia's presentation or by reading about them in <http://ikit.org/fulltext/inpress/CollectiveCog.pdf>.

The workshop will examine (1) the scientific or theoretical basis for each of the principles, (2) how the principles connect into a system, (3) what each principle means and how it is similar to or distinct from familiar constructivist principles, and (4) how the principles may be applied to classroom practice and technology use.

Pre-conference Tour for ICT Exemplary Schools

On September 1, 2005 (Thursday), a tour of selected Elementary and Secondary Schools will be arranged for international guests. Those who wish to participate in the tour please make an inquiry to conference organizers.

Registration

We hope you register in advance to get the discount benefit; early registration deadline for the conference is August 30, 2005. For registering online, please visit our web site at <http://www.kset.or.kr>.

Type	Before 8/30	On Site
Conference Registration	\$30.00 (₩30,000)	\$40.00 (₩40,000)
	\$15.00 (₩15,000)	\$20.00 (₩20,000) (for students)
Workshop A		\$20.00 (₩20,000)
Workshop B		\$20.00 (₩20,000)

Accommodations

President Hotel is located in Downtown Seoul, across the street from the Seoul City Hall.

If you need hotel arrangements, KSET can assist you to reserve rooms at 50% discounted rate. Please contact +82-2-2220-1517 or email kset-conf@ihanyang.ac.kr for reservations.

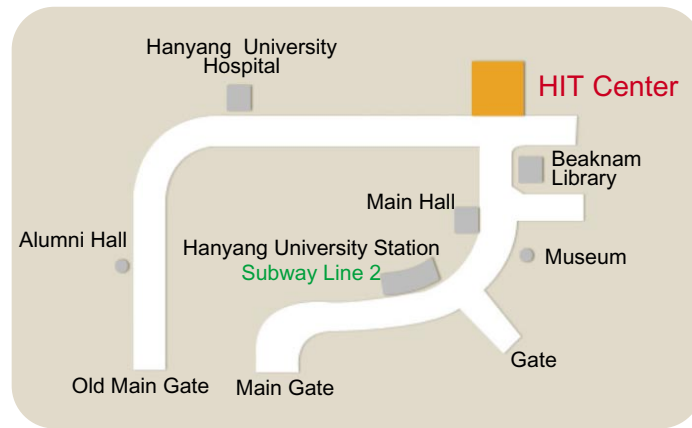
Room Type	Discounted Rate (included breakfast)
Single Room (One Twin Bed)	₩127,050
Double Room (One Queen Bed)	₩163,350
Twin Room (Two single Beds)	₩169,400

<http://www.hotelpresident.co.kr>

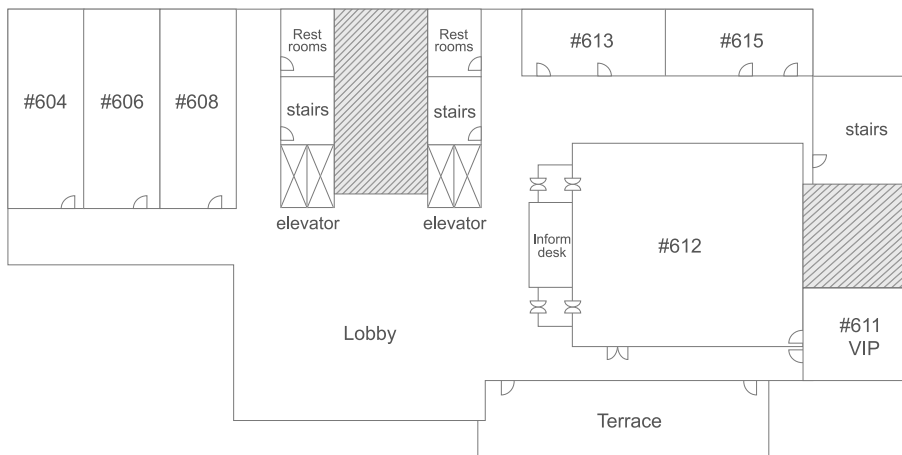
Conference Venue

Conference Site

The conference and the exhibitions are located in Hanyang Institute of Technology Center (6th floor), Hanyang University, Seoul, Korea.



6th Floor Plan of HIT Center, Hanyang University



General Inquiries about the Conference

For more information on the conference, please visit our website at <http://www.kset.or.kr>, or email us at kset-conf@ihanyang.ac.kr.

Organizing Committee

Organizing Committee Chair

Mi-Lee Ahn (Hanyang University)

Secretariat

Wooyong Eom (Keimyung University)

Presidential Committee

Sungho Kwon (Chair, Hanyang University)

Kyungsu Wang (Chonbuk National University)

Youngsun Yang (Kwandong University)

Program Committee

Mi-Lee Ahn (Chair, Hanyang University)

Sook-Hi Kang (Catholic University), Namin Shin (Dongguk University),

ShinCheon Kang (Kongju National University), Jeeheon Ryu (Korea University)

20th Anniversary Research Committee

Cheolil Lim (Chair, Seoul National University)

Okhwa Lee (Chungbuk National University), Inae Kang (Kyung Hee University),

Inwoo Park (Korea University), Jung Hoon Leem (University of Incheon)

20th Anniversary Ceremony Committee

Yeongmahn You (Chair, Hanyang University)

Jung Ye Kim (Ewha Womans University), Eun Jung Jang (Dongduk Women's University), Hyugil Kwon (Cheonju National University of Education), Dohun Kim (Hyundai Research Institute), Young-Ran Joung (Korea National Open University), Kyunghye Kang (Hanyang University), Sook-Young Ryu (Hanyang University), Youn-Kyung Seo (Hanyang University)

Budget and Operation Committee

HoiSoo Kim (Chair, Chonnam National University)

Heebae Kim (Kwandong University), Wooyong Eom (Keimyung University),

Haesun Chung (Bizkiz Co., Ltd.), Heeok Heo (Sunchon National University), I I-

Hyun Jo (Chuncheon National University of Education), Myoungsook Choi

(Keimyung University), HyeonAe Sim (Hanyang University), Kyu Suk Sung

(Keimyung University)



The Korean Society for Educational Technology

Rm#401, Annex of College of Education, Hanyang University,
 Seoul, 133-791, Korea
 E-mail: kset11@korea.com <http://www.kset.or.kr>
 Tel: 82-2-2220-1517 Fax 82-2-2291-9697

KSET 20TH ANNIVERSARY INTERNATIONAL CONFERENCE

Conference Sponsors
